

Telebelt® TB 110 Telescopic Belt Conveyor



- **110 ft Horizontal Reach**
- **Fully Hydraulic Variable Speed Feed Conveyor**
- **360° Rotation of Feeder and Main Conveyors**
- **Max. Rated Output 360 yd³/hr (275m³/hr)**
- **Handle Concrete from 0" to 12" Slumps (0 to 305mm)**
- **Place Materials Sized up to 4" (100mm)**
- **Setup and Operate Under Low 15 ft 9 in (4.8m) Heights**

Boom Four section telescopic boom – steel/aluminum base with three high strength aluminum telescopic sections. Simple to operate, one predetermined control lever extends and retracts all boom sections in a synchronized manner. At full extension, a 110 ft horizontal reach is achieved, making the net reach comparable to a 38 meter boom pump. Maintenance-free sealed roller bearings mean no time wasted greasing; and the quick telescoping feature and versatile 360° rotation enables immediate use once on-site, allowing for the completion of several projects per day.

Main Conveyor Belt A continuous 18" (457mm) 3-ply nylon core vulcanized spliced belt – hot melt with no staples or mechanical splices – is on a series of highly durable pulleys. An infinitely variable belt speed control from 0 to 10 allows the operator to select the ideal output for the task from a low 1 yard an hour (0.76m³/hr) up to a maximum rated 360 cubic yards an hour (275m³/hr). A tungsten carbide scraping plate at the discharge end helps scrape materials back into the pour, keeping the unit and the job site clean.

Feeder Belt A versatile 38 ft (11.6m) single section aluminum "active" hydraulic feed conveyor with 360° rotation allows materials to be loaded from virtually any position. Feed the 18" (457mm) belt via mixer truck, dump truck, skid-steer loader or front-end loader. A sturdy integrated UHMW polyethylene feeder hopper can accommodate the toughest of mixes, as well as aggregates from sand to 4" (100mm) rock – with no priming necessary.

Boom Control and Operation Main conveyor functions are controlled through a **Modular Boom Control (MBC)** system. Unlike a stacked valve arrangement this unique modular approach allows maintenance on a single valve without removing the entire valve assembly. This reduces labor and parts costs, yet improves overall machine control. All boom and

belt functions are at the operator's fingertips via the lightweight standard proportional radio remote control. This ergonomic design features main and feed conveyor rotation and elevation; main conveyor telescopic functions; main and feeder on/off and variable independent belt speed control. Additionally, the TB 110 comes with a standard "black and white" 90 ft (27m) cable remote for sites that do not permit the use of the radio remote. The unit is also equipped with an operator's control station from where all functions can be operated manually in emergency situations.

Handling Concrete Mixes Due to the unique style of conveying, mix designs can be matched exactly to customer specs. As admixtures are not needed to help place concrete, the TB 110 can convey harsh mixes from 0" to 12" (305mm) slumps or any flowable fill material or aggregate up to 4" (100mm).

Trunk or End Hose Telebelt conveyor design allows for smooth, surge-free flow from the 15 ft (4.57m) trunk to reduce labor costs and make life easier on the hoseman. Both 8" (200mm) and 12" (305mm) tremies, which are steel cones at the tip end of the main conveyor, and 8" and 12" delivery trunks, with chain binders to connect them, come as standard equipment. For larger volume pours and rock jobs, the 12" package is the ideal choice with a simple and quick interchangeable design.

Power Four (4) hydraulic circuits are driven by two full horsepower air shift rear PTOs from the truck engine. A low engine rpm and only 150 hp (112kW) is needed to run the Telebelt at full capacity for reduced noise levels, less fuel consumption and lowered maintenance costs.

Outriggers Unique "butterfly" design outriggers allow quick and easy setup in congested areas, whether on solid or rough terrain. This helps to quickly complete pours from one convenient setup location and eliminate the need for all-wheel drive mixer trucks. Front and rear outriggers manually swing-out and hydraulically extend up or down. Activate the outrigger controls from behind the cab or from the touch pad control mounted on each outrigger for added convenience.

Pusher Axle A standard air-actuated pusher axle helps the Telebelt TB 110 legally meet federal bridge formula weight requirements in most states.

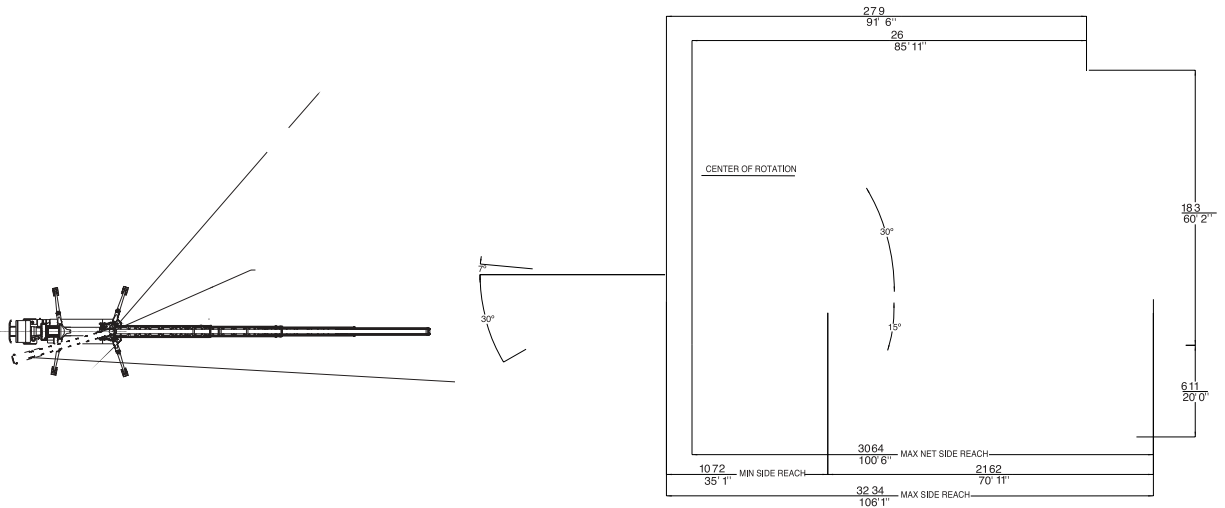
Clean Out For a quick and basically self-cleaning process, just run water into the feeder hopper and the belt. A high pressure 2500 psi (173 bar) hydraulically-driven pump with a large capacity 200 gallon (757L) water tank is standard. And remember, with conveying, no additional concrete is wasted.

Additional Standard Features Transfer chute, aluminum diamond deck work platforms, large side-mounted aluminum tool boxes, emergency stop button, high quality paint finish, operator manuals and ship-away kit are all standard.

Options Rock hopper, front-end loader hopper, California hopper, low profile hopper, side loading channels and custom paint schemes are optional. Consult factory for options not listed.



Specifications TB 110 Belt Conveyor



TB 110 Belt Conveyor Specifications

Conveyor horizontal reach –		
Maximum at 0°	110'	(32.34m)
Maximum at 30°	91'6"	(27.90m)
Conveyor belt width	18"	(457mm)
Feed conveyor length	38'	(11.58m)
Feed conveyor belt width	18"	(457mm)
Trunk/end hose length	15'	(4.57m)
Discharge height from grade –		
Maximum at 30°	60'2"	(18.35m)
Maximum at -15°	-20'	-(6.11m)
Rated capacity at 0°	6 yd ³ /min	(4.6m ³ /min)
main & feed conveyors	360 yd ³ /hr	(275m ³ /hr)
Rated capacity up to 20°	3.8 yd ³ /min	(2.9m ³ /min)
main & feed conveyors	230 yd ³ /hr	(175m ³ /hr)

Maximum theoretical values listed above.

Outriggers

Net reach beyond outriggers –		
at 0 degrees	100'6"	(30.64m)
at 30 degrees	85'11"	(26.20m)

Outrigger spread –

Front, swing out-hydraulic up/down	24'2"	(7.37m)
Rear, swing out-hydraulic up/down	25'3"	(7.68m)

General Specifications

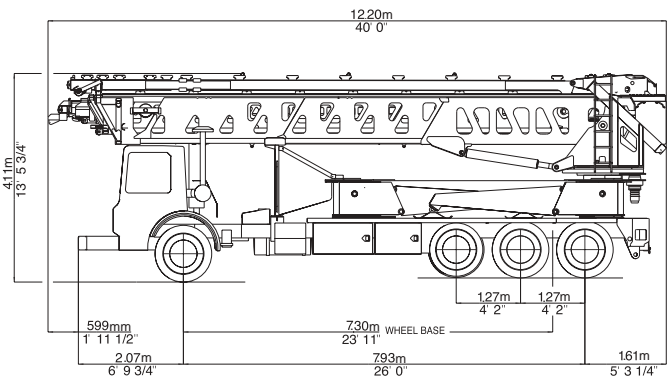
Water tank capacity	200 gal	(757L)
Hydraulic oil tank capacity with cooler	150 gal	(568L)

Truck Specifications

Mack MR 688S

Weight	20,015 lbs	(9,078kg)
Wheelbase	287"	(7,290mm)
Cab height	104"	(2,642mm)
Steering radius	45'6"	(13.87m)
Steering angle	38°	
Fuel tank capacity	110 gal	(416L)
Transmission	T309LR 9-Speed	

All specifications apply to units mounted on MACK MR 688S



Transport Axle Weights - lbs. (kg)

Based on Model Mack MR 688S

Steering	Tandem	Total
20,924 lbs (9,491)	39,825 lbs (18,064)	60,749 lbs (27,555)

Weights are approximate and include conveyor truck, full hydraulic oil, driver and some fuel. Dimensions vary with different truck makes, models and specifications.



Putzmeister America
1733 90th Street
Sturtevant
Wisconsin 53177 USA

Telephone (262) 886-3200
(800) 884-7210
Facsimile (262) 884-6338
www.putzmeister.com

Right to make technical amendments reserved.