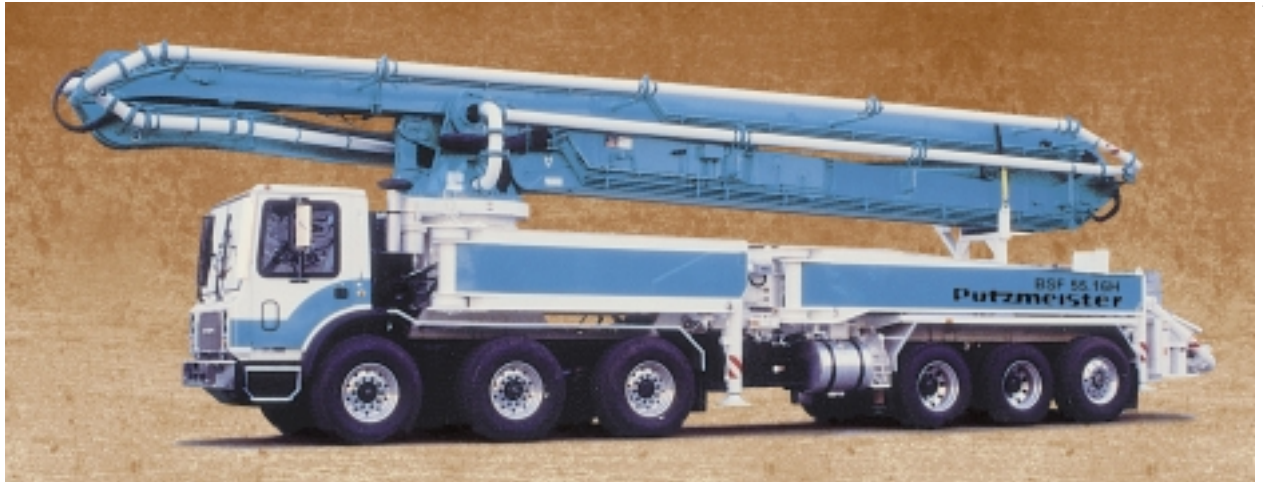


55-Meter Truck-Mounted Concrete Boom Pump



- **180 ft Vertical Reach**
- **4-Section Roll and Fold Boom Design**
- **Induction Hardened 5" Delivery Line - All Sections**
- **Standard Auto Lubrication System**
- **Up to 260 yd³/hr Max Concrete Output**
- **Free Flow Hydraulics**

Boom Attaining 180 ft heights, this impressive unit features a 4-section roll-and-fold boom made of high quality, fine-grained steel in a box-type design for enhanced stability.

Delivery Line The boom is equipped with a 5 in *induction hardened* delivery line mounted in easy lift-out brackets for simple delivery line replacement. Standardized elbows and straight pipe sections are used for common component availability and easy replacement.

Pedestal The fully integrated pedestal design of the Putzmeister 55M absorbs all forces as outriggers and boom are within one structural element. This design results in less twist, reduced forces transferred to the truck frame, a small outrigger footprint, low overall weight and quick setup. The boom pedestal includes a rotation bearing and access openings to simplify changing the turret pipe. It also incorporates a hydraulic oil tank and water tank for improved weight distribution. Triple suction filters with indicator gauges are located outside of the pedestal for easy access, and a condensation trap is found in the tank to collect water. Two spacious decks allow convenient storage of pipe and hoses.

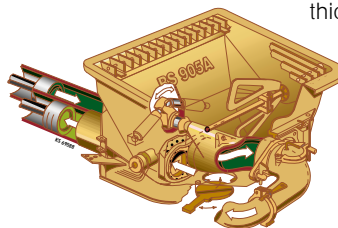
Outriggers All outrigger functions are fully hydraulic with integral cylinders. Front outriggers swing out, telescope and extend down while the rear outriggers swing out and extend down. For extended *on-site* use, a diesel fuel tank is built into one of the rear outrigger legs and holds up to 185 gallons (700L). Aluminum outrigger pads (4) with two side compartments are included with each unit.

Radio Remote Controls The pump comes standard with radio remote controls, featuring fully proportional boom speed control for smooth and precise positioning of the boom at greater distances. This is an extremely important feature on larger sized models since at their extreme reach, even a small amount of movement can result in a faster moving boom at the end hose.

Clean Out A 406 psi (28 bar) hydraulically-driven water pump with a 238 gallon (900L) water tank and an additional 185 gallon (700L) water tank in one of the outrigger legs make clean out easy.

Concrete Pump With the same setup, only Putzmeister has the technology to offer both 260 yd³/hr output and provide 1233 psi concrete pressure with its .20H pump on the piston side (or 210 yd³/hr output and 1233 psi with its .16H pump – rod side). With competitive designs, you have to decide if you want either high pressure or high volume. Key features include a free flow hydraulic system for smooth controllable pumping as well as hard-chromed concrete cylinders and automatic lubrication of the concrete pistons for long service life. This pump has a fully adjustable volume control which allows very slow pumping while retaining full concrete pressure and boom speed.

S-Valve Ideal for high pressure applications, our hard faced S-Valve with gradual 8 in to 7 in (200 to 180mm) reduction is designed to handle extremely harsh concrete mixes. A thick-walled valve construction, exclusive Putzmeister hard-chromed concrete cylinders and multi-piece piston cup design provide longer lasting wear overall.



Hopper With a large 19.4 cu ft (550L) capacity, this **EZ Clean Out** RS 905A hopper features a remixer, vibrator and splash guards as standard. A low 51 in (1295mm) hopper height allows easy discharging from a mixer truck.

Specifications

55-Meter Concrete Pump

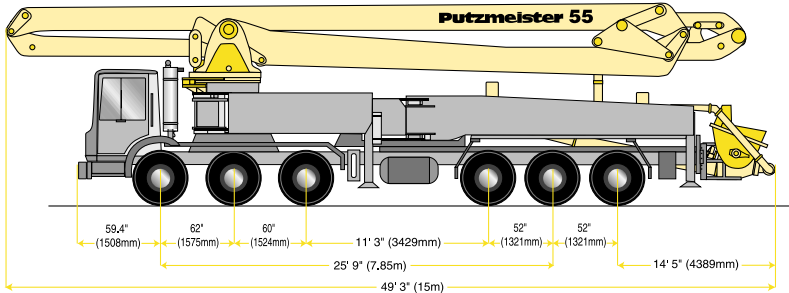
Truck-Mounted Specifications

Based on Model MACK MR688S

Length	49' 3"	(15.00m)
Width	8' 2"	(2.50m)
Height	12'11"	(3.94m)
Wheelbase	309"	(7,849mm)
Front axle weight	53,395 lbs	(24,217kg)
Rear axle weight	51,540 lbs	(23,375kg)
Approx. total weight	104,935 lbs	(47,592kg)

Weights are approximate and include pump, boom, truck, full hydraulic oil, driver and some fuel. Varies with options selected.

Dimensions will vary with different truck makes, models and specifications.



Boom Specifications • Roll and Fold Design

Height & Reach

Vertical reach	180'	(54.86m)
Horizontal reach	167'4"	(51.00m)
Reach from front of truck*	158'9"	(48.40m)
Reach depth	135'	(41.15m)
Unfolding height	48'	(14.63m)

4-Section Boom

1st section articulation	180°	
2nd section articulation	180°	
3rd section articulation	180°	
4th section articulation	210°	
1st section length	29'10"	(9.10m)
2nd section length	43'6"	(13.25m)
3rd section length	46'9"	(14.25m)
4th section length	46'11"	(14.29m)

General Specifications

Pipeline size (ID) metric ends	5"	(125mm)
with couplings (133x4mm)+	5.5"	(140mm)
Rotation	365°	
End hose-length (heavy duty)	13'	(4m)
End hose-diameter	5"	(125mm)
Outrigger spread L-R—front swing out & telescope	34'9"	(10.60m)
Outrigger spread L-R—rear swing out	32'9"	(9.98m)

Pump Specifications

55.16H

55.20H

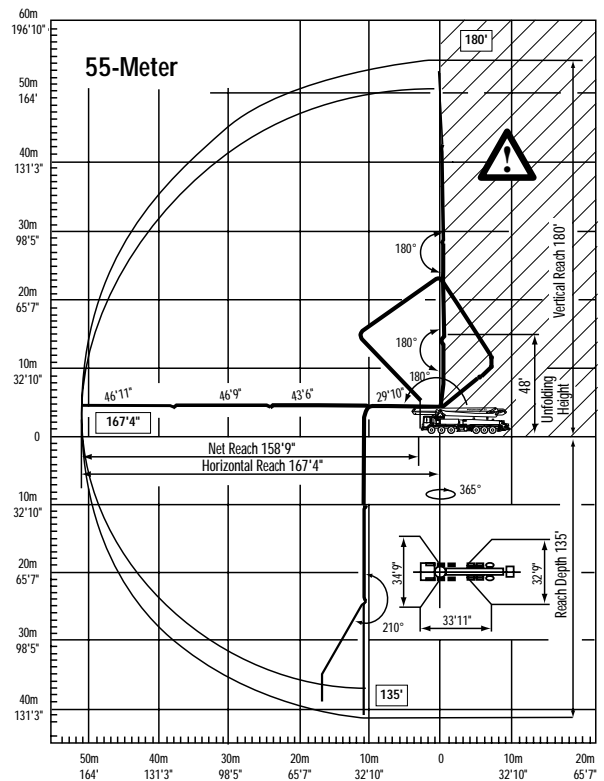
Output- rod side	210 yd ³ /hr (160m ³ /hr)	—
piston side	146 yd ³ /hr (112m ³ /hr)	260 yd ³ /hr (200m ³ /hr)
Pressure-rod side	1233 psi (85 bar)	—
piston side	1885 psi• (130 bar)•	1233 psi• (85 bar)•
Concrete cylinder dia.	9" (230mm)	11" (280mm)
Stroke length	83" (2100mm)	83" (2100mm)
Max strokes per minute-		
rod side	31	—
piston side	21	28
Volume control	0-Full	0-Full
Vibrator	Standard	Standard
Hard chromed concrete cylinders	Standard	Standard
Hydraulic system	Free Flow	Free Flow
Hyd. system pressure	5075 psi (350 bar)	5075 psi (350 bar)
Differential cylinder dia.	5.5" (140mm)	5.5" (140mm)
Rod diameter	3.1" (80mm)	3.1" (80mm)
Maximum size aggr.	2.5" (63mm)	2.5" (63mm)
Water tank - pedestal	238 gal (900L)	238 gal (900L)
- outrigger	185 gal (700L)	185 gal (700L)

Maximum theoretical values listed.

* Applies to units mounted on PMA stock truck-MACK MR688S

• Standard delivery line system rated at max line pressure of 1233 psi (85 bar)

+ Only delivery line 133x4 mm is to be used on the 55 Meter boom



End hose not to be operated in caution area.



Putzmeister America
1733 90th Street
Sturtevant
Wisconsin 53177 USA

Telephone (262) 886-3200
(800) 884-7210
Facsimile (262) 884-6338
www.putzmeister.com